

Quick Start Guide

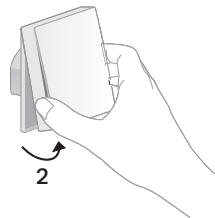
Light
Switch

©2021 TP-Link 7106509212 REV1.0.0

*Images may differ from your actual product.

1. Power Up Your Switch

- 1 Slide the lock to the OPEN position, then hold both sides of the faceplate and pull it away from the back.



- 2 Insert two AAA batteries. Make sure the positive and negative ends of the batteries are facing the correct direction.

2. Set Up Your Switch

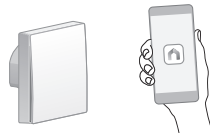
- 1 Get the **Tapo** app from the App Store or Google Play.



OR



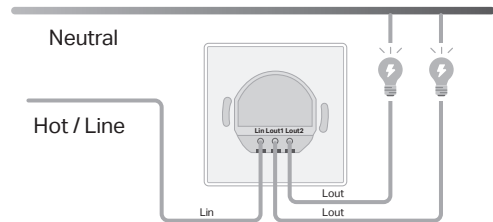
- 2 Tap the ⊕ button in the app and select your model. Follow the in-app instructions to complete setup.



Flip the page over to continue.

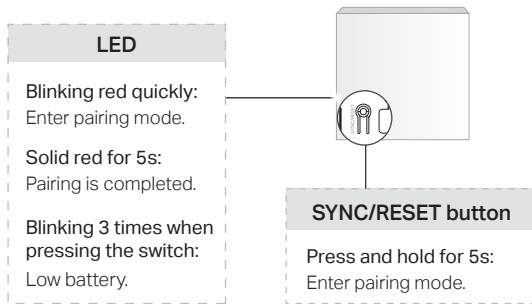
3. Wire Your Switch

Install your switch following the wiring diagram below. Make sure you turn off the circuit breaker first.



- The hot / line wire is usually connected to the terminal labelled "COM" of your old switch.
- Different Tapo switches have different number of Lout wires.

Internal LED & Button



For technical support, user guides, FAQs, warranty and more, please visit www.tapo.com/support/



For EU/UK Version:

Operating Frequency / max output power: 868MHz~868.6MHz / 25mW (e.r.p)

Before installing, servicing or removing the switch, read and follow all safety precautions including the following:

- Follow all national and local safety regulations and practices. If you are uncertain or uncomfortable when performing the installation, consult a qualified electrician.
- CAUTION – Risk of Electric Shock – More than one disconnect switch may be required to de-energize the equipment before servicing. A circuit breaker which disconnects the Line and Neutral conductor simultaneously is suitable. Ensure power is off at the circuit breaker before removing or installing any switch. Use a non-contact voltage tester to ensure the power is off.
- Do not install the Smart Switch with wet hands or when standing on wet or damp surfaces.
- Keep the device away from water, fire, humidity or hot environments
- Do not attempt to disassemble, repair, or modify the device. If you need service, please contact us.
- Do not use the device where wireless devices are not allowed.

TP-Link hereby declares that the device is in compliance with the essential requirements and other relevant provisions of directives 2014/53/EU, 2009/125/EC, 2011/65/EU and (EU)2015/863.

The original EU Declaration of Conformity may be found at <https://www.tapo.com/en/support/ce/>

TP-Link hereby declares that the device is in compliance with the essential requirements and other relevant provisions of the Radio Equipment Regulations 2017. The original UK Declaration of Conformity may be found at <https://www.tapo.com/support/ukca/>

